

# The Endurance™

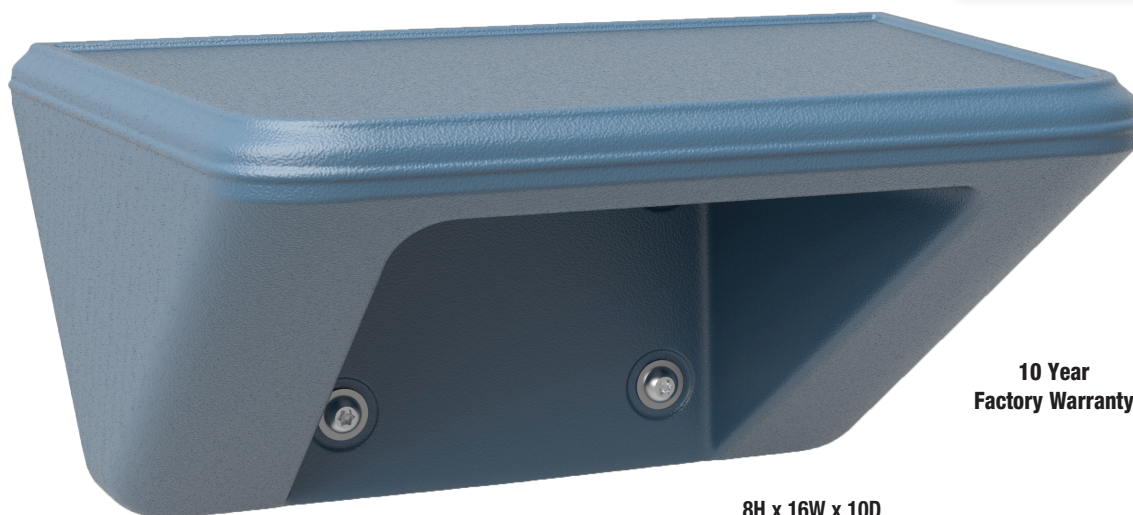
## All Purpose Wall Mount Shelf/Step 2.0

### Wall Mount Shelf/Step - Large

FURNISHINGS & PRODUCTS  
NOW INFUSED WITH

**Corx**


ANTIMICROBIAL COMPOUND



**10 Year  
Factory Warranty**

8H x 16W x 10D

#### FEATURES:

- Durable, one piece, rotationally molded design for increased strength. Constructed of high impact “no break” polyethylene. No steel or wood components
- Functions as shelf or step
- Bolt to the wall via pilot holes with hardware of your choice
- Sound dampening
- Easy to clean, sanitize & maintain
- Passes Flammability UL 94 HB
- Tested to ISO 22196 showing a >99% reduction in bacteria
- Flame Retardant (passes Cal 133)  
Test reports available upon request
- Manufactured to ISO Quality Standards in the USA 

ITEM	COLOR
8600AQ	Aqua
8600BK	Black
8600BG	Blue Gray
8600BN	Brown
8600BY	Burgundy
8600GY	Gray
8600GN	Green
8600IG	Indigo
8600MB	Midnight Blue
8600SD	Sand
8600SB	Slate Blue
8600SG	Stone Gray

Available in



Custom colors available upon request. Call Cortech for details.

### OVERVIEW

The Endurance<sup>™</sup> All Purpose Wall Mount Shelf/Step 2.0 is a versatile, heavy duty, large shelf that is ideal for continuous, intensive use environments. **Manufactured to ISO Quality Standards in the USA.**

### FABRICATION/MATERIAL

Durable, one piece, rotationally molded design for increased strength. Constructed of high impact polyethylene. No steel or wood components. Flame Retardant (as shown passes Cal 133). Test reports available upon request.

**COLOR** Black, Blue Gray, Brown, Burgundy, Gray, Green, Sand and Slate Blue. Custom colors available upon request.

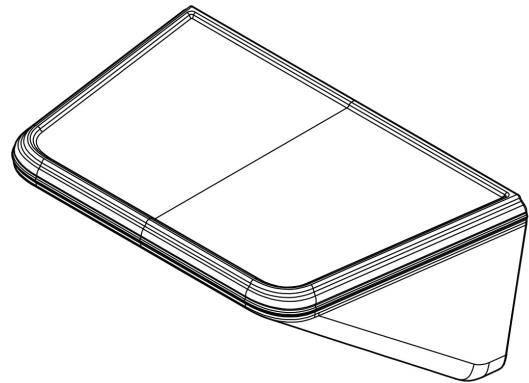
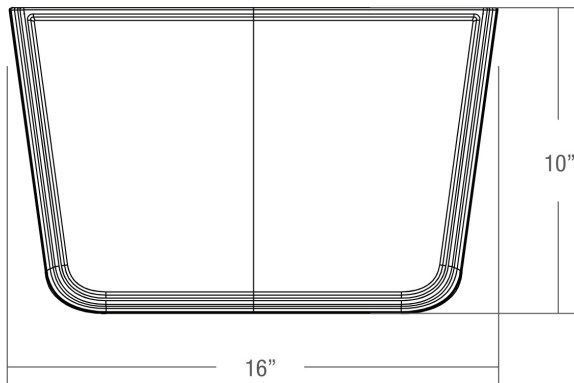
**WEIGHT** 4 lbs.

**ASSEMBLY** Bolt to the wall via concealed pilot holes with hardware of your choice.

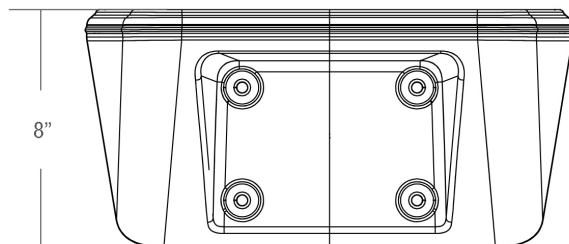
**WARRANTY** 10 Year Factory Warranty.

**MAINTENANCE** Easy to clean, sanitize & maintain.

TOP VIEW



FRONT VIEW



SIDE VIEW

