

The Endurance™ 2 Shelf

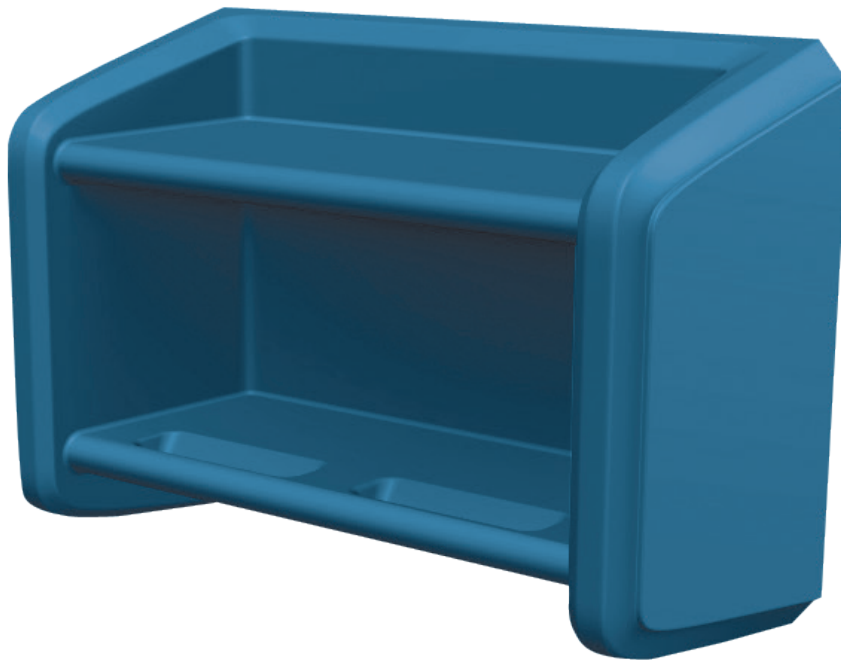
Wall Mount Shelving

FURNISHINGS & PRODUCTS
NOW INFUSED WITH

CORx


ANTIMICROBIAL COMPOUND

**10 Year
Factory Warranty**



24H x 35W x 15D

FEATURES:

- Durable, one piece, rotationally molded design for increased strength. Constructed of high impact “no break” polyethylene. No steel or wood components
- Molded in shelving for open storage of personal items
- 2.0 cu. ft. internal shelf storage
- Ligature resistant shelf for hanging clothes
- Bolt to the wall via concealed pilot holes with hardware of your choice
- Sound dampening
- Easy to clean, sanitize & maintain
- Passes Flammability UL 94 HB
- Tested to ISO 22196 showing a >99% reduction in bacteria
- Flame Retardant (passes Cal 133). Test reports available upon request
- Manufactured to ISO Quality Standards in the USA 

ITEM	COLOR
7604AQ	Aqua
7604BK	Black
7604BG	Blue Gray
7604BN	Brown
7604BY	Burgundy
7604GY	Gray
7604GN	Green
7604IG	Indigo
7604MB	Midnight Blue
7604SD	Sand
7604SB	Slate Blue
7604SG	Stone Gray

Available in



Custom colors available upon request. Call Cortech for details.

Our Intense Use Products Contribute to a Safe and Humane Environment.
For Full Specifications Call Toll Free 800-571-0770 / Fax: 630-455-0813 / or Visit www.cortechusa.com

OVERVIEW

The Endurance™ 2 Shelf is a versatile, heavy duty shelf that is ideal for continuous, intensive use environments. **Manufactured to ISO Quality Standards in the USA.**

FABRICATION/MATERIAL

Durable, one piece, rotationally molded design for increased strength. Constructed of high impact polyethylene. No steel or wood components. Flame Retardant (as shown passes Cal 133). Test reports available upon request.

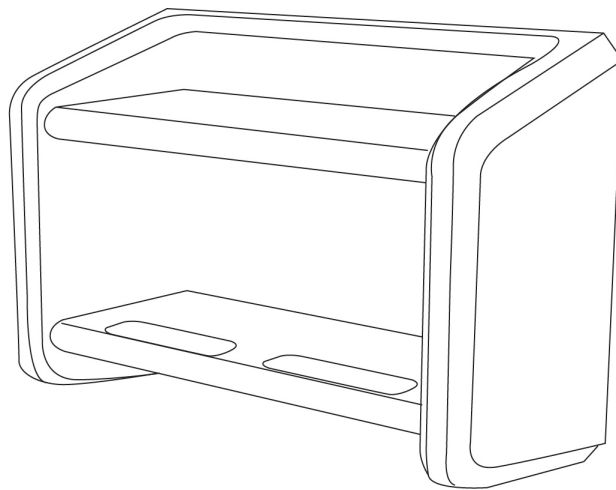
COLOR Black, Blue Gray, Brown, Burgundy, Gray, Green, Sand and Slate Blue. Custom colors available upon request.

WEIGHT 20 lbs

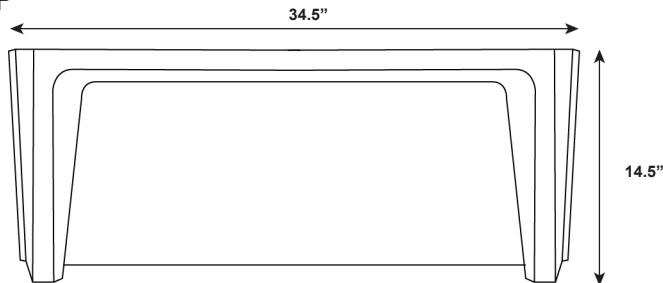
ASSEMBLY Bolt to the wall via concealed pilot holes with hardware of your choice.

WARRANTY 10 Year Factory Warranty.

MAINTENANCE Easy to clean, sanitize & maintain.



TOP



SIDE

